

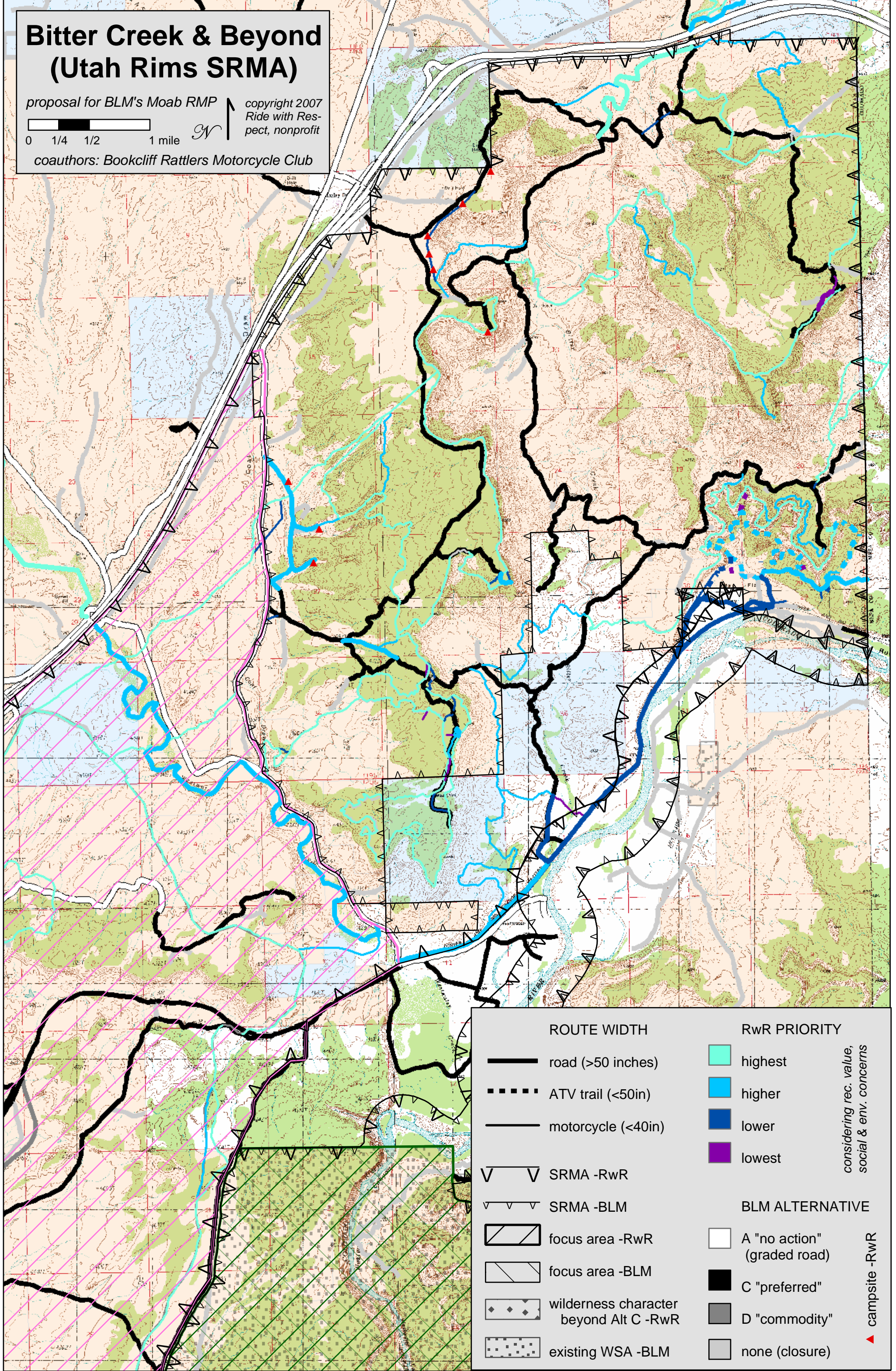
Bitter Creek & Beyond (Utah Rims SRMA)

proposal for BLM's Moab RMP

copyright 2007
Ride with Respect,
nonprofit



coauthors: Bookcliff Rattlers Motorcycle Club



ROUTE WIDTH		RwR PRIORITY	
	road (>50 inches)		highest
	ATV trail (<50in)		higher
	motorcycle (<40in)		lower
	SRMA -RwR		lowest
	SRMA -BLM		
	focus area -RwR		
	focus area -BLM		
	wilderness character beyond Alt C -RwR		
	existing WSA -BLM		
	A "no action" (graded road)		
	C "preferred"		
	D "commodity"		
	none (closure)		

considering rec. value,
social & env. concerns

 campsite -RwR