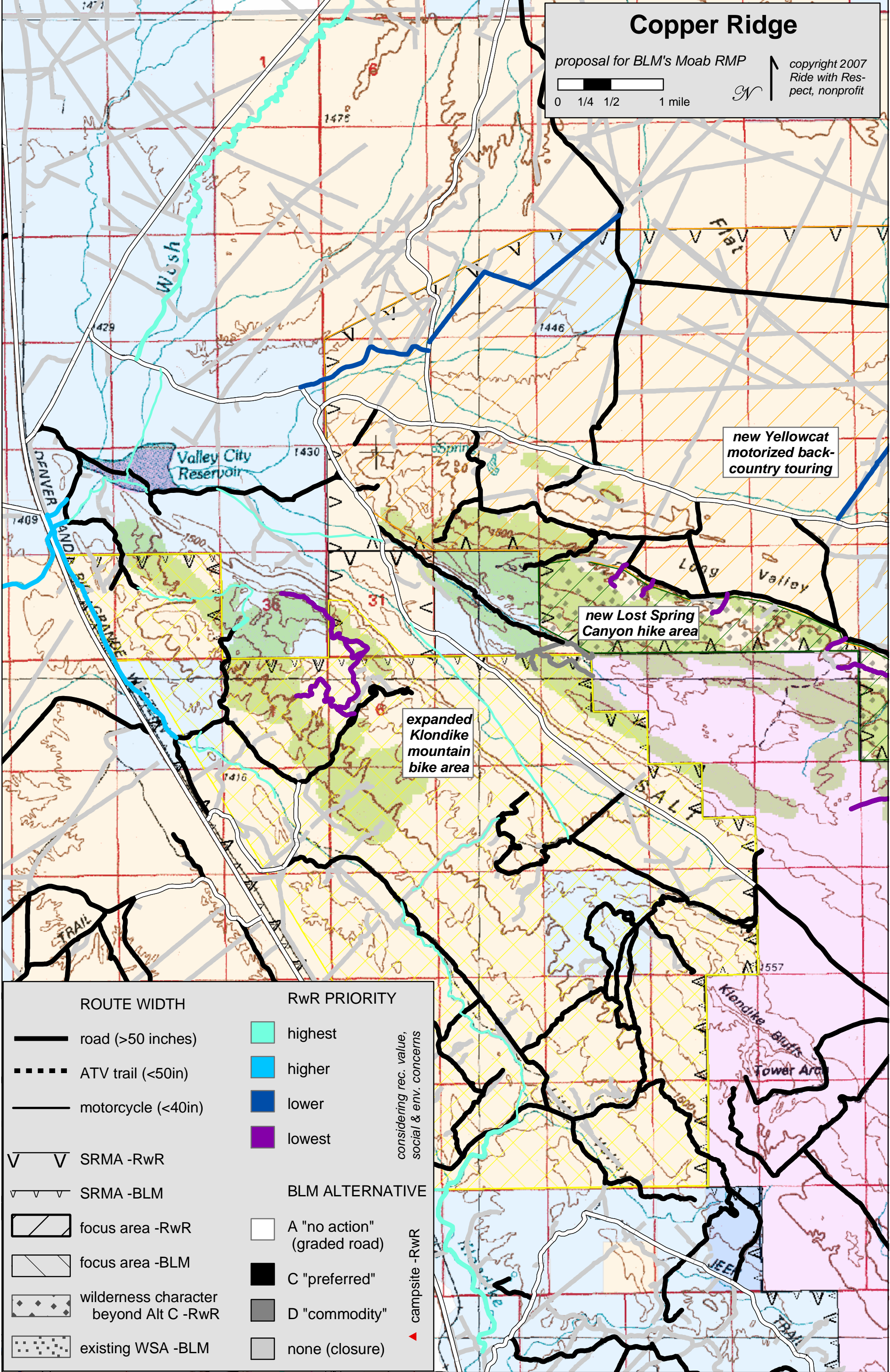


# Copper Ridge

proposal for BLM's Moab RMP

copyright 2007  
Ride with Res-  
pect, nonprofit



new Yellowcat  
motorized back-  
country touring

new Lost Spring  
Canyon hike area

expanded  
Klondike  
mountain  
bike area

## ROUTE WIDTH

- road (>50 inches)
- ATV trail (<50in)
- motorcycle (<40in)

- SRMA -RwR
- SRMA -BLM

- focus area -RwR
- focus area -BLM

- wilderness character beyond Alt C -RwR
- existing WSA -BLM

## RwR PRIORITY

- highest
- higher
- lower
- lowest

## BLM ALTERNATIVE

- A "no action" (graded road)
- C "preferred"
- D "commodity"
- none (closure)

considering rec. value,  
social & env. concerns

campsite -RwR

